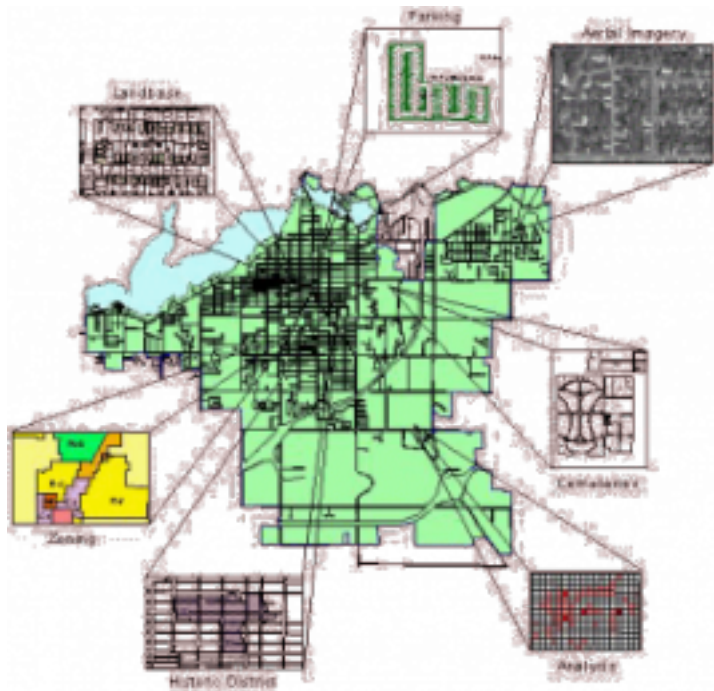


## Geographic Information System (GIS)



### **What We Do**

GIS is used in many ways by City staff to make decisions. The primary responsibility of the GIS staff is to respond to requests for maps and data analysis. In addition, many resources have been made available to the public online.

See the maps page for details.

### **What is it?**

GIS is an acronym for Geographic Information System. A Geographic Information System is a computerized method of storing and analyzing location and other information about a specific object. An object can be a building, a parcel of land, a street, a zoning district, etc.

A GIS is made up of many different layers of information. The way these layers relate to each other and their associated properties is what gives a GIS its power. Analysis can be done on the relationships between the layers and how their characteristics are similar and different. In addition, the layers can be linked to external databases to increase the number of questions that can be answered.

**Source URL (retrieved on 2015-01-31 11:26):**

<http://www.cityofholland.com/mapping/geographic-information-system-gis>